

## Workaround for BT Access Manager users who upgraded to Mac OSX 10.6 (Snow Leopard)

BT Access Manager (Huawei) crashes on Mac OS 10.6 (Snow Leopard) and does not allow a 3G connection to be established.

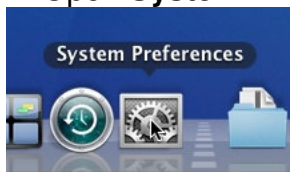
These instructions apply to users who installed BT Access Manager on Mac OS 10.5 (Leopard) and have subsequently upgraded to Mac OSX 10.6. They allow a user to configure a manual 3G connection, bypassing the BT Access Manager (Huawei) application.

This should be considered a temporary fix until an updated BT Access Manager is produced by Huawei.

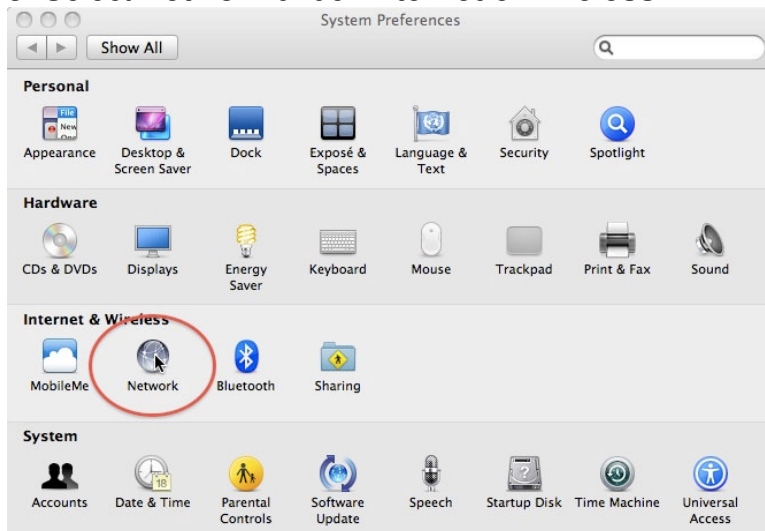
## Instructions

1. Connect the **BT 3G Dongle** to a spare USB port.

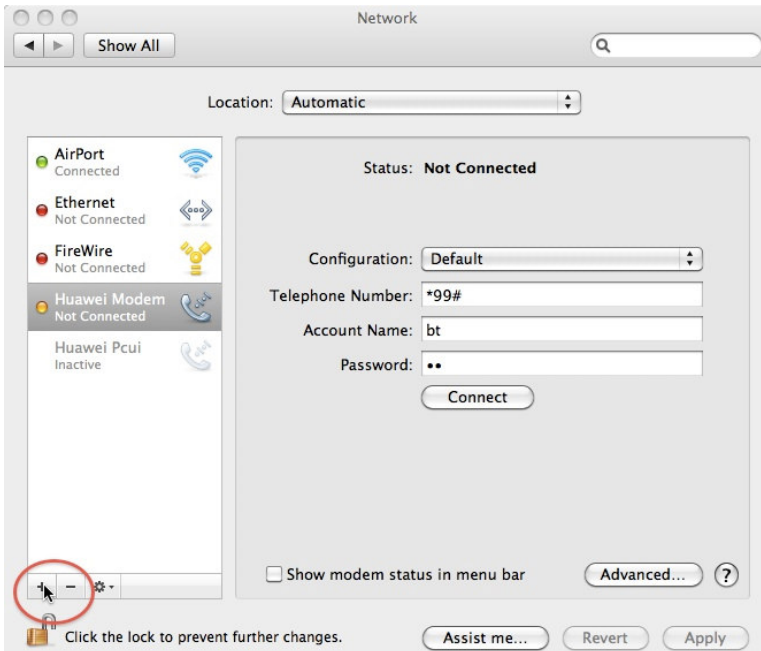
2. Open **System Preferences**.



3. Select **Network** under **Internet & Wireless**.



4. On the Network dialog, click the **+** button to add a new service.



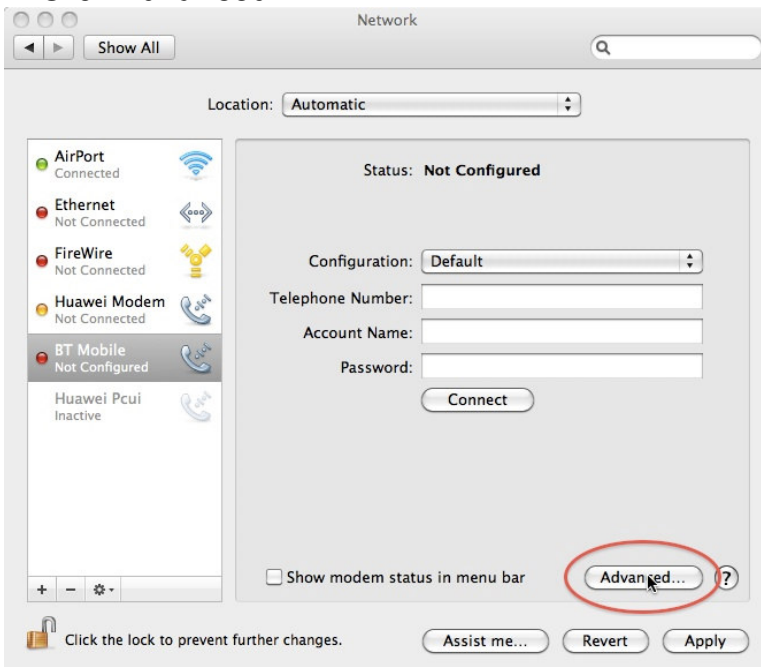
5. For the **Interface**, select *HUAWEI Mobile* from the drop down list.



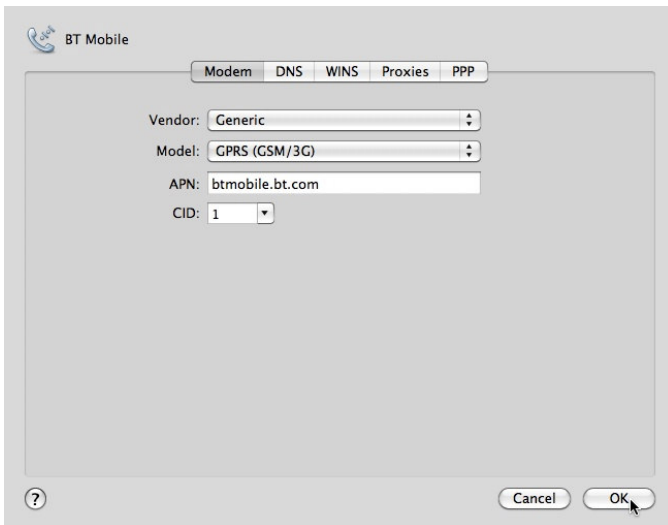
6. For the **Service Name**, enter *BT Mobile* then click **Create**.



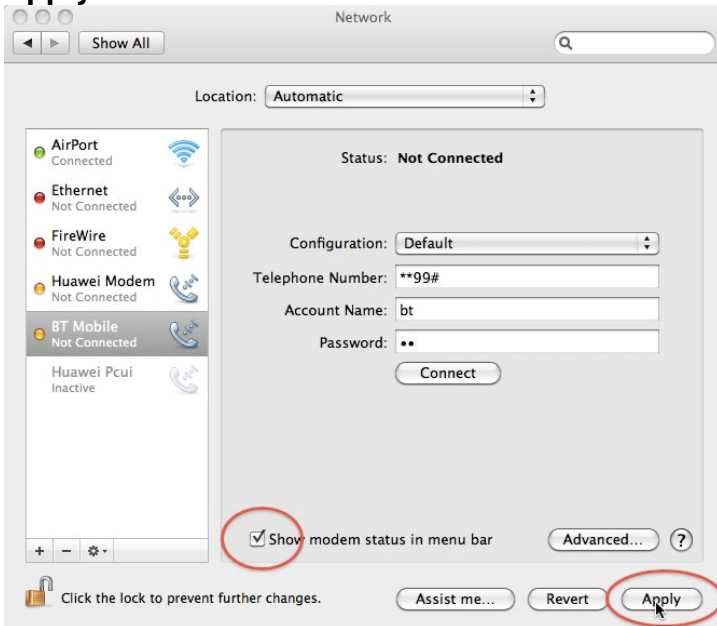
## 7. Click **Advanced**.



## 8. Select *Generic* for the **Vendor** and *GPRS(GSM/3G)* for the **Model**. Enter *btmobile.bt.com* for the **APN**. Click **OK**.



9. Enter **\*\*9#** for the **Telephone Number**. Enter **bt** for the **Account Name** and **bt** for the **Password**. Check the *Show modem status in menu bar* checkbox. Click **Apply**.



10. To **connect**, click the modem icon in the menu bar and select *Connect BT Mobile*. To **disconnect**, click the modem icon and select *Disconnect BT Mobile*.

