

Workaround for installing BT Access Manager on Mac OSX 10.6 (Snow Leopard)

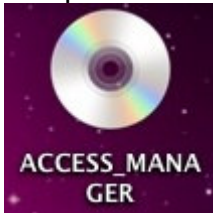
BT Access Manager (Huawei) crashes during installation on Mac OS 10.6 (Snow Leopard) and prevents the 3G dongle being used.

These instructions apply to users who are installing BT Access Manager on Mac OS 10.6 (Snow Leopard). They allow a user to configure a manual 3G connection, bypassing the BT Access Manager (Huawei) application.

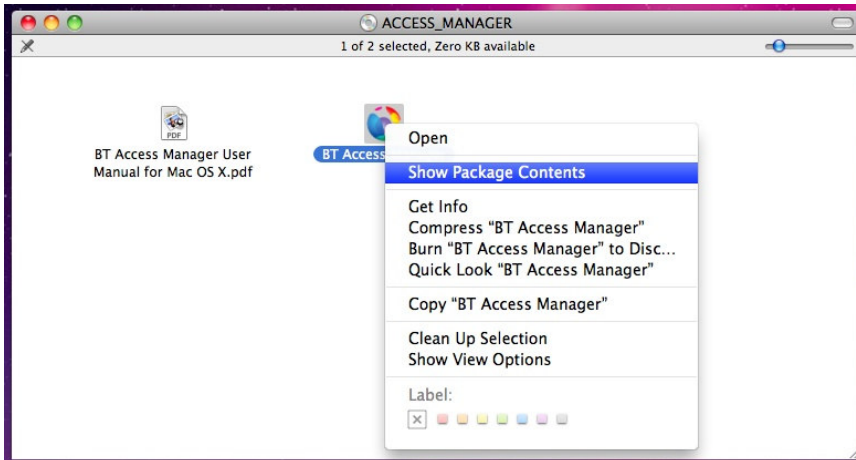
This should be considered a temporary fix until an updated BT Access Manager is produced by Huawei.

Instructions

1. Connect the **BT 3G Dongle** to a spare USB port.
2. Open the **ACCESS_MANAGER** drive once it appears on the desktop

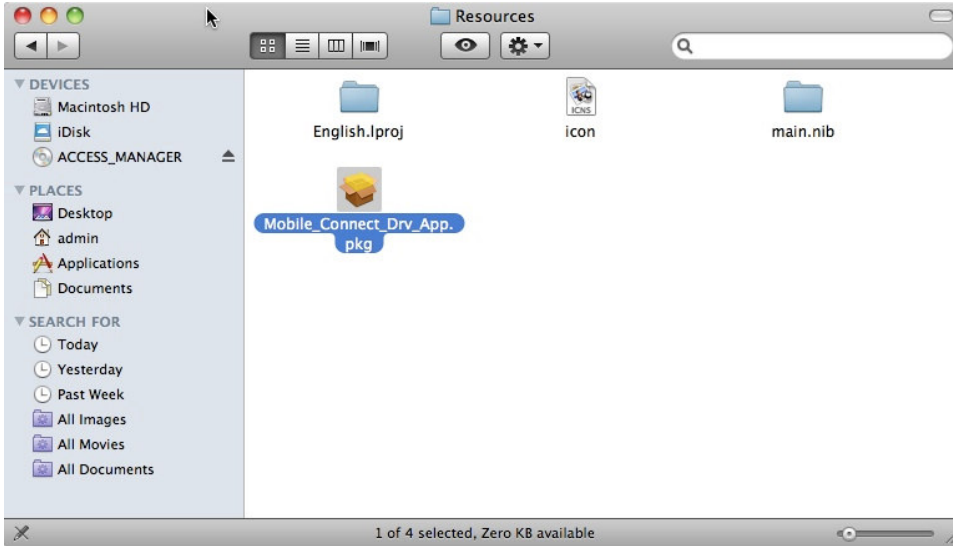


3. Right click on the **BT Access Manager** program and select **Show Package Contents**



4. Navigate into **Contents** then **Resources**.

5. Run the **Mobile_Connection_Drv_App.pkg** package and follow the installation instructions.

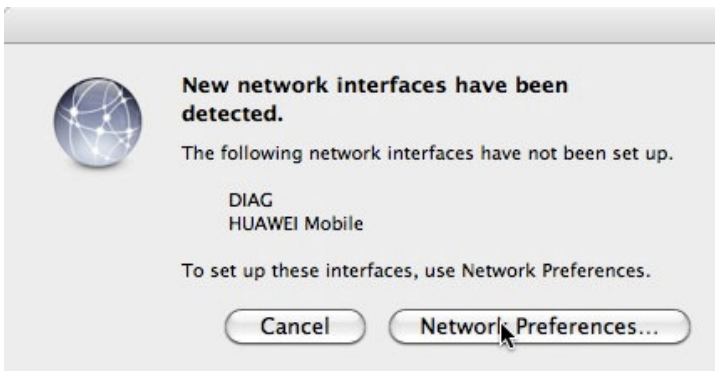


6. Once the installation has completed, the following error messages will be displayed after a few seconds. Click **OK** to both.

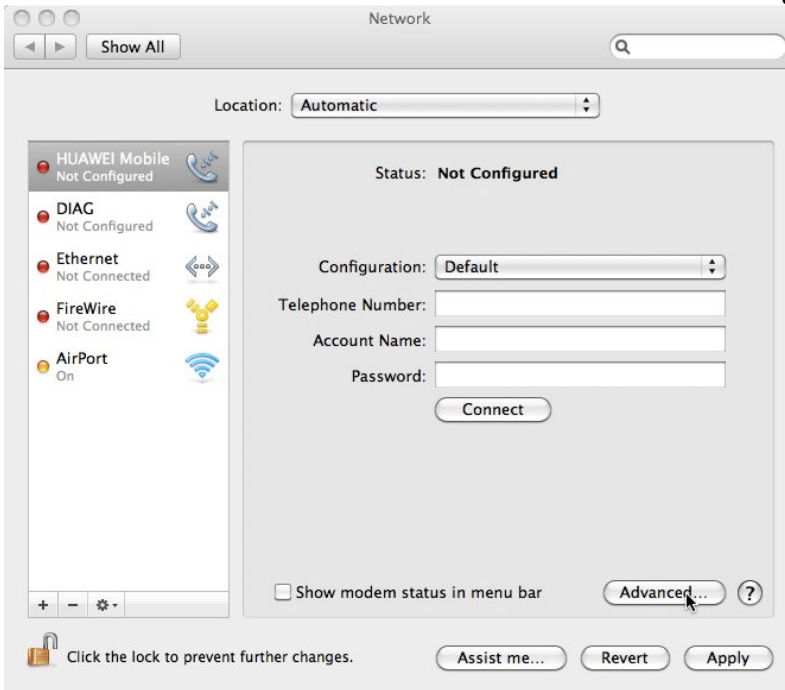


7. Run the **Mobile_Connection_Drv_App.pkg** package **again** and follow the installation instructions.

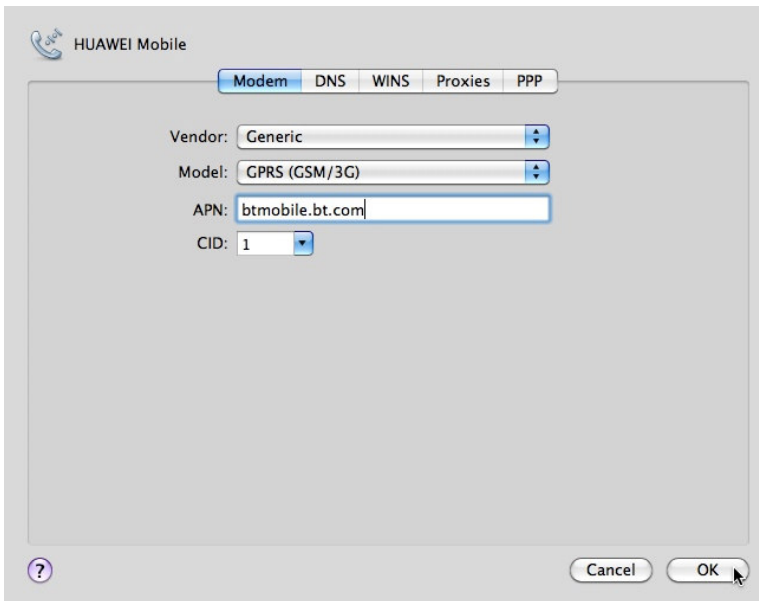
8. Once the installation has completed, after a few seconds the following dialog should appear. Click **Network Preferences**.



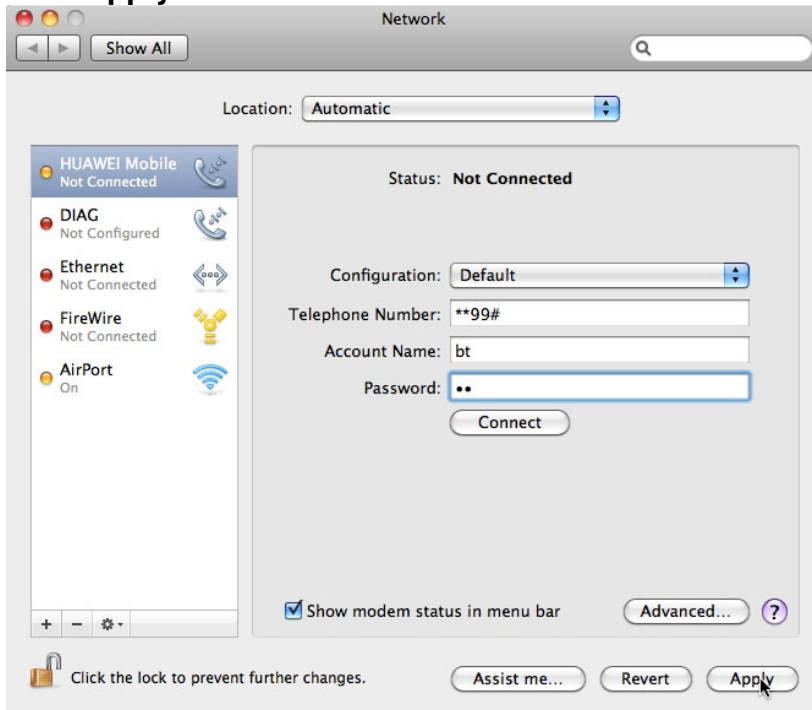
9. With **HUAWEI Mobile** selected on the Network dialog, click **Advanced**.



10. Select *Generic* for the **Vendor** and *GPRS(GSM/3G)* for the **Model**. Enter *btmobile.bt.com* for the **APN**. Click **OK**.



11. Enter ****9#** for the **Telephone Number**. Enter **bt** for the **Account Name** and **bt** for the **Password**. Check the *Show modem status in menu bar* checkbox. Click **Apply**.



12. To **connect**, click the modem icon in the menu bar and select *Connect HUAWEI Mobile*. To **disconnect**, click the modem icon and select *Disconnect HUAWEI Mobile*.

